



## Engineering the future of resilient energy systems.

### Who We Are

YONERGY delivers advanced engineering leadership and technical advisory services for large-scale renewable energy, power reliability, and energy resilience projects. We partner with government, defense, and commercial stakeholders to design and implement secure, efficient, and future-ready energy systems.

### Our Value to Clients

- Enhance energy security and resilience
- Accelerate renewable energy adoption
- Reduce operational risk and lifecycle costs
- Deliver complex projects with confidence and precision

### Program Leadership & Stakeholder Engagement:

- ✓ Lead multidisciplinary engineering teams across distributed environments (on-site and remote)
- ✓ Serve as the primary technical interface between clients, contractors, utilities, and regulators
- ✓ Facilitate high-level engagement from executive leadership to field technicians
- ✓ Drive alignment between strategic objectives and technical execution

### Advanced Energy Engineering Expertise

Our team conducts rigorous engineering analysis to ensure systems are robust, scalable, and mission-ready.

- ✓ Power Reliability & Energy Resilience
- ✓ Renewable Energy Systems (Solar, Wind, Hybrid)
- ✓ Microgrid Design & Integration
- ✓ Electrical Distribution & Transmission Systems
- ✓ High Voltage Power Systems & Substations
- ✓ System Interconnection & Grid Integration

### Project Development & Execution Support

- ✓ Support implementation of large-scale energy projects using innovative financing structures, including third-party financing
- ✓ Guide projects through permitting, construction, commissioning, and integration
- ✓ Ensure compliance with regulatory, safety, and operational standards

24 years of  
Global  
Experience

Over 1,000  
Building  
Assessments

21.5 million  
sq.ft. Area of  
Energy Analysis

Over  
\$10 million  
Cost Savings

## Support Leadership for Mission-Critical Energy Resilience

### Technical Advisory & Design Optimization

- Develop conceptual system designs, capacity models, and production forecasts.
- Define operations & maintenance (O&M) strategies.
- Establish power distribution and interconnection requirements.
- Lead technical design reviews with utilities and industry partners.
- Optimize system specifications to meet operational and mission-critical requirements.

### Industry Insight & Continuous Innovation

Actively monitors and integrates the latest developments in:

- Emerging energy technologies
- Grid modernization and resilience strategies
- Regulatory and policy changes
- Construction and commissioning best practices

This ensures our clients remain at the forefront of energy innovation and risk mitigation.

### Project Development & Support

- Scope and develop ECM project proposals
- Assist with UESC, ESPC, and third-party financing
- Provide lifecycle cost analysis (LCCA) and savings calculations
- Coordinate with CORs, DPWs, base engineers, and contracting offices

### Why YONERGY

#### Proven Engineering Depth

- Extensive experience in utility-scale power systems and renewable energy engineering
- Expertise in electrical design, specifications, and one-line diagrams

#### Strategic Communication & Leadership

- Clear, effective communication across all stakeholder levels
- Ability to translate complex technical concepts into actionable insights

#### Operational Excellence

- Strong program management, prioritization, and time management
- Data-driven reporting and analysis using industry-standard tools

#### Trusted Partner for Critical Environments

- Experience supporting defense and high-security environments
- Capability to operate within stringent compliance and clearance requirements



## Capability Statement

YONERGY is a cutting-edge consulting firm specializing in comprehensive resources, such as energy and water efficiency and cost reduction solutions. As an industry pioneer, we leverage advanced technology to provide tailored solutions that address our clients' most pressing needs.

## Core Competencies

24 years of Global Experience	Over 1,000 Building Assessments	21.5 million sq.ft. Area of Energy Analysis	Over \$10 million Cost Savings
-------------------------------	---------------------------------	---	--------------------------------

Our team of seasoned experts and business professionals brings decades of experience in CONUS and OCONUS energy and water efficiency projects, delivering support from boots-on-the-ground assessments to advising senior government decision-makers

- Energy and Water Auditing (ASHRAE Levels I, II, III)
- Resource Efficiency Management (REM)
- Utility Data Analysis and Benchmarking
- Navigation of Incentives and Rebates
- Energy Modeling and Simulation
- Project Financial Analysis (ROI, Payback, LCCA)
- Federal and State Energy Program Compliance Assistance
- Measurement and Verification (M&V) Review
- Third-Party Financing Project Support (ESPC, UESC, PPA)
- Utility Rate Analysis

## Differentiators

**“Reshaping the energy efficiency consulting landscape with next-gen solutions”**

At YONERGY, we have incorporated artificial intelligence (AI) into our methodology to advance and elevate our consulting services. We are developing several innovative AI tools designed to enhance our analysis's accuracy, speed, and effectiveness. Our approach identifies the most impactful opportunities by aligning cost and consumption data, enabling clients to make informed decisions that yield measurable savings and sustained performance. With AI integration, we are streamlining energy analysis, unlocking deeper insights, and delivering even greater value to our clients.

We bring efficiency to our energy efficiency consulting through a structured, tiered approach and data-driven solutions.

## Company Snapshot

CAGE: **47QSMS25D0059** UEI: **ZFM2PU428EB1** CAGEI: **9XX34**  
Gov. Business POC: Yonatan Tadesse  
Phone: 1-703-867-8971  
E-Mail: [services@yonergy.com](mailto:services@yonergy.com)  
Work Area: Worldwide

## Primary NAICS

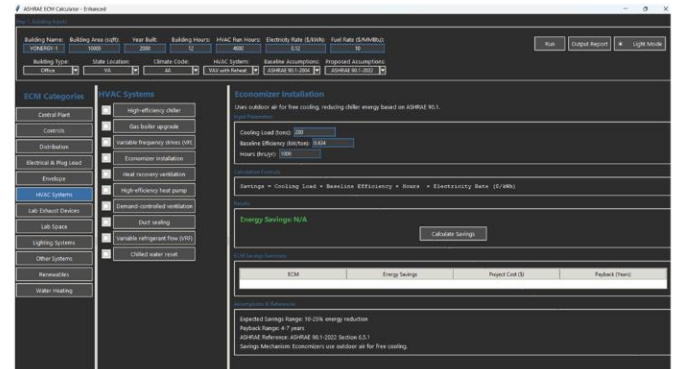
SIN	Description	Large Category
541690	Technical Consulting Services	Professional Services
541690E	Energy Services	Facilities
ANCILLARY	Ancillary Supplies & Services	Miscellaneous

## Business Type

23 - Minority Owned Business  
Small business  
VA – SwaM Certified

## Our in-house developed advanced tools

### In-house smart tools



### DoW Client Energy Audits

- Fort Lee (now Fort Gregg-Adams), VA
- Fort Leonard Wood, MO
- Presidio of Monterey, CA
- Natick Soldier Systems Center, MA
- Fort Hamilton, NY
- Fort Carson, CO
- Carlisle Barracks, PA
- Fort Shafter, HI
- Dugway Proving Ground, UT
- Fort Belvoir, VA
- West Point Military Reservation, NY
- Fort Meade, MD
- Fort Sill, OK
- USAG Benelux – Belgium, Netherlands, Luxembourg
- USAG Rheinland-Pfalz, Germany
- USAG Bavaria, Germany



## Types of Energy Audit

### ASHRAE Level I – Walk-Through Analysis

**Purpose:** Quick scan to identify apparent low-hanging fruit.

**Best For:** Initial screening or compliance with basic mandates.

- Conduct a brief site walk-through
- Review utility bills (12–24 months)
- Identify basic ECMs (Energy Conservation Measures)
- Provide a rough order of magnitude (ROM) savings estimate
- Flag significant energy end uses

✓ **Outcome:** High-level audit report with essential opportunities and payback insights.

### ASHRAE Level II Energy Survey and Analysis

**Purpose:** Deeper dive into systems and moderate complexity ECMs.

**Best For:** Organizations seeking real, actionable projects with decent ROI.

**Key Steps:**

- Complete a detailed on-site assessment
- Analyze energy usage patterns and equipment performance
- Collect field data and operating schedules
- Conduct end-use breakdown and ECM identification
- Develop cost/savings estimates and simple financial analysis

✓ **Outcome:** Actionable energy audit report with prioritized ECMs, estimated savings, costs, and payback periods.

### ASHRAE Level III Investment-Grade Audit (IGA)

**Purpose:** Deep-dive financial-grade audit for capital-intensive decisions.

**Best For:** Projects requiring financing, M&V, or board-level approval.

**Key Steps:**

- Perform intensive data collection & submetering
- Energy Model systems (e.g., using DOE-2 or eQuest)
- Evaluate complex ECMs, including controls & system upgrades
- Conduct detailed cost analysis, lifecycle cost, and risk assessment
- Develop financial-grade savings projections
- Optional: M&V plan and integration with performance contracts (e.g., ESPC)

24 years of  
Global  
Experience

Over 1,000  
Building  
Assessments

21.5 million  
sq.ft. Area of  
Energy Analysis

Over  
\$10 million  
Cost Savings

## REM Support includes but is not limited to

**Resource Efficiency Manager (REM)** provides services to clients, not just saving energy—it's about delivering mission-aligned, measurable results that cut costs, boost resilience, and support federal mandates.

### Energy & Water Savings Identification

- Conduct site surveys, walk-through audits, and/or ASHRAE Level I/II assessments
- Pinpoint Energy Conservation Measures (ECMs) and Water Conservation Measures (WCMS)
- Estimate energy, water, and cost savings, plus payback periods

### Utility Data Analysis & Benchmarking

Track and analyze utility bills (electric, gas, water, steam, etc.)

- Identify usage trends, spikes, and anomalies
- Support energy intensity reduction goals (e.g., per EISA 2007, Executive Orders)

### Project Development & Support

- Scope and develop ECM project proposals
- Assist with UESC, ESPC, and third-party financing
- Provide lifecycle cost analysis (LCCA) and savings calculations
- Coordinate with CORs, DPWs, base engineers, and contracting offices

### Program & Policy Support

- Help installations comply with energy mandates, federal energy goals, and OMB scorecards
- Develop or update Energy Management Plans
- Advise on ISO 50001, metering strategies, and energy security/resilience planning

### Construction & Commissioning Oversight

- Review energy-related components in new construction and retrofits
- Support commissioning (Cx) / retro-commissioning (RCx)
- Monitor construction project compliance with energy goals

### Training & Outreach

- Conduct energy awareness campaigns
- Train facility personnel, energy managers, and users on best practices
- Promote behavioral change for energy conservation

A REM is the bridge between boots-on-the-ground energy efficiency and high-level strategic targets. They're expected to drive action, remove roadblocks, and deliver results that align with mission and cost reduction.